

Object : Ventspils tipogrāfija  
Installation : Apgaismojums  
Project number : 1  
Date : 14.03.2017

## Luminaire data

### MRS 052 740 L17 A024 S... (VIZULO MINI MAR...)

#### Data sheet

---

**VIZULO MINI MARTIN 52W**

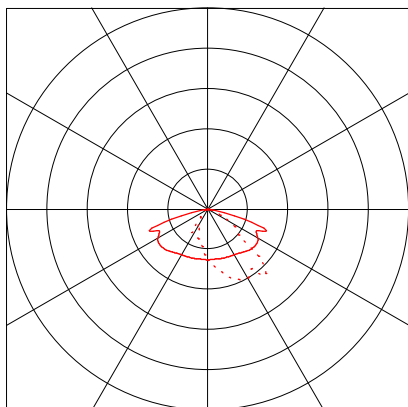
**MRS 052 740 L17 A024 SN NG1 O60 S-BIN**

#### Luminaire data

Absolute Photometry  
Luminaire efficacy : 107.16 lm/W  
Classification : A30 100.0% ↑0.0%  
CIE Flux Codes : 39 74 98 100 100  
UGR 4H 8H (20%, 50%, 70%)  
C0 / C90 : 40.4 / 21.9  
Control gear :  
System power : 52 W  
Length : 520 mm  
Width : 220 mm  
Height : 90 mm

#### Equipped with

Quantity : 1  
Designation : MRS 24 LED  
Colour : 4005 K  
Luminous flux : 5572.5 lm  
Colour reproduction : 74



Object : Ventspils tipogrāfija  
Installation : Apgaismojums  
Project number : 1  
Date : 14.03.2017

## Luminaire data

**SR 068 740 02 01 2 S N ... (VIZULO STORK 68W)**

### Data sheet

---

**VIZULO STORK 68W**

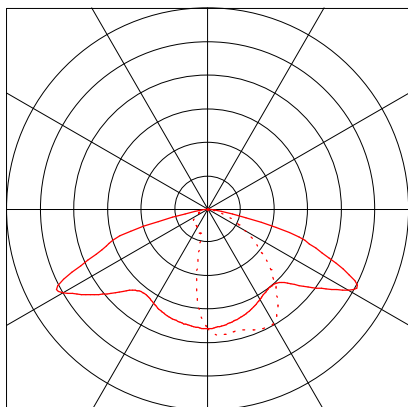
**SR 068 740 02 01 2 S N ND 03 1**

#### Luminaire data

Absolute Photometry  
Luminaire efficacy : 101.83 lm/W  
Classification : A30 99.9% ↑ 0.1%  
CIE Flux Codes : 39 73 97 100 100  
UGR 4H 8H (20%, 50%, 70%)  
C0 / C90 : 33.7 / 17.9  
Control gear :  
System power : 68 W  
Length : 880 mm  
Width : 370 mm  
Height : 47 mm

#### Equipped with

Quantity : 1  
Designation : Stork 2 modules  
Colour : 3986.2  
Luminous flux : 6924.7 lm  
Colour reproduction : 72



Object : Ventspils tipogrāfija  
Installation : Apgaismojums  
Project number : 1  
Date : 14.03.2017

## Luminaire data

### RZB, Terra Edelstahl 245 (641303.000.1)

#### Data sheet

---

Manufacturer: RZB



#### **641303.000.1    Ground recessed luminaire adjustable    Terra Edelstahl 245**

with Netzspannungs-LEDs (ohne Konverter)

Series: Terra Edelstahl 245

Type of protection: 68

Protection class: I

Nominal tension(s): 220 - 240 V / : 50 - 60Hz

Colour: stainless steel

Type of mounting: floor fixture

Lamp: LED 26W, Kabel 4000K

Electrical control unit 1: 00

L: 245mm B: 245mm H: 2mm

DA: 300mm HE: 320mm

Safety mark: F-mark

Luminous flux of luminaire: 2.100 lm

System power: 26W,

Beam angle combined: 180°

Number of fittings B10: 30

Number of fittings B16: 50

Inrush current: 5 A

UGR 4H 8H diagonally (C0): 15,6

EEC: A+

EEC lamp included: A+

#### **Luminaire data**

Absolute Photometry

Luminaire efficacy : 80.77 lm/W

Classification : E04 0.0% ↑ 100.0%

CIE Flux Codes : 0 0 0 0 100

UGR 4H 8H (20%, 50%, 70%)

C0 / C90 : - / -

Control gear : Netzspannungs-LEDs (ohne Konverter)

System power : 26 W

Length : 245 mm

Width : 245 mm

#### **Equipped with**

Quantity : 1

Designation : LED Modul 840

Colour : 840

Luminous flux : 2100 lm

Colour reproduction : 80

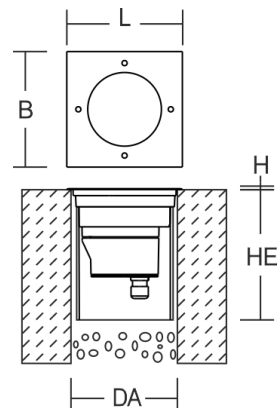
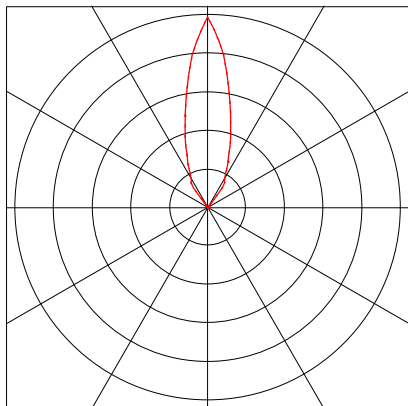
Object : Ventspils tipogrāfija  
Installation : Apgaismojums  
Project number : 1  
Date : 14.03.2017

## Luminaire data

**RZB, Terra Edelstahl 245 (641303.000.1)**

### Data sheet

---



Object : Ventspils tipogrāfija  
Installation : Apgaismojums  
Project number : 1  
Date : 14.03.2017

## Luminaire data

### RZB, Terra Edelstahl 245 (641302.000.1)

#### Data sheet

---

Manufacturer: RZB



#### **641302.000.1    Ground recessed luminaire adjustable    Terra Edelstahl 245**

with Netzspannungs-LEDs (ohne Konverter)

Series: Terra Edelstahl 245

Type of protection: 68

Protection class: I

Nominal tension(s): 220 - 240 V / : 50 - 60Hz

Colour: stainless steel

Type of mounting: floor fixture

Lamp: LED 26W, Kabel 4000K

Electrical control unit 1: 00

L: 245mm B: 245mm H: 2mm

DA: 300mm HE: 320mm

Safety mark: F-mark

Luminous flux of luminaire: 2.400 lm

System power: 26W,

Beam angle combined: 180°

Number of fittings B10: 30

Number of fittings B16: 50

Inrush current: 5 A

UGR 4H 8H diagonally (C0): 13,7

EEC: A+

EEC lamp included: A+

#### **Luminaire data**

Absolute Photometry

Luminaire efficacy : 92.31 lm/W

Classification : E04 0.0% ↑ 100.0%

CIE Flux Codes : 0 0 0 0 99

UGR 4H 8H (20%, 50%, 70%)

C0 / C90 : - / -

Control gear : Netzspannungs-LEDs (ohne Konverter)

System power : 26 W

Length : 245 mm

Width : 245 mm

#### **Equipped with**

Quantity : 1

Designation : LED Modul 840

Colour : 840

Luminous flux : 2400 lm

Colour reproduction : 80

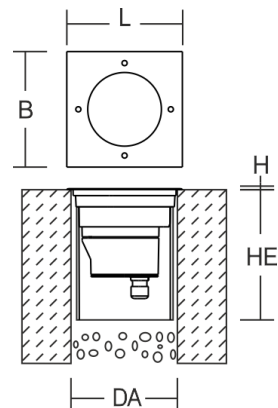
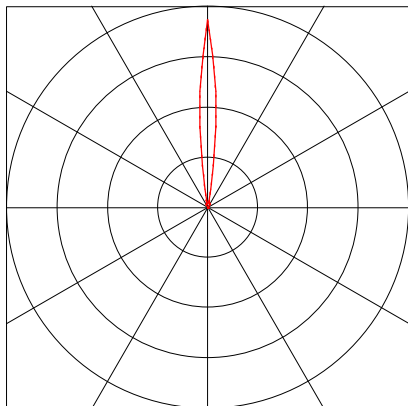
Object : Ventspils tipogrāfija  
Installation : Apgaismojums  
Project number : 1  
Date : 14.03.2017

## Luminaire data

**RZB, Terra Edelstahl 245 (641302.000.1)**

### Data sheet

---



Object : Ventspils tipogrāfija  
Installation : Apgaismojums  
Project number : 1  
Date : 14.03.2017

## Luminaire data

### RZB, Alu-Star Mini (721815.0031.1)

#### Data sheet

Manufacturer: RZB



#### 721815.0031.1 Floodlights and spotlights Alu-Star Mini

with Konverter

Series: Alu-Star

Type of protection: IP65

Protection class: I

Nominal tension(s): 220 - 240 V / 50 - 60Hz

Housing of corrosion-resistant pressure die-cast aluminium for outdoor use, powder-coated. Peg made of fiber reinforced plastic. Tilt angle can be adjusted and locked in 5 degree steps featuring angular scale.

Toughened glass cover. LED with integral driver. Rotation symmetrical reflector made of reflex-boosted MIRO-SILVER®. Standard Gore#

Protective Vents diaphragm valve for reduction of condensation. With cable and Schuko plug.

LED included.

Colour: anthracite metallic

Type of mounting: earth spike

Lamp: LED 24W, Kabel 4000K Ra: 80

Electrical control unit 1: Constant current pso.

L: 400mm B: 115mm H: 205mm

Safety mark: F-mark

Luminous flux of luminaire: 1.800 lm

System power: 24W,

Beam angle combined: 43°

UGR 4H 8H diagonally (C0): 18,7

EEC: A+

EEC lamp included: A+

#### Luminaire data

Absolute Photometry

Luminaire efficacy : 75 lm/W

Classification : A70 100.0% ↑ 0.0%

CIE Flux Codes : 96 99 100 100 100

UGR 4H 8H (20%, 50%, 70%)

C0 / C90 : 17.5 / 17.5

Control gear : Konverter

System power : 24 W

Length : 200 mm

Width : 115 mm

Height : 370 mm

#### Equipped with

Quantity : 1

Designation : LED Modul 840

Colour : 840

Luminous flux : 1800 lm

Colour reproduction : 80

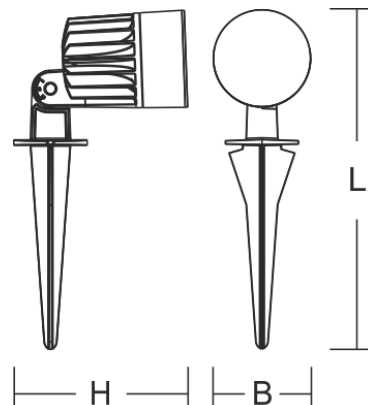
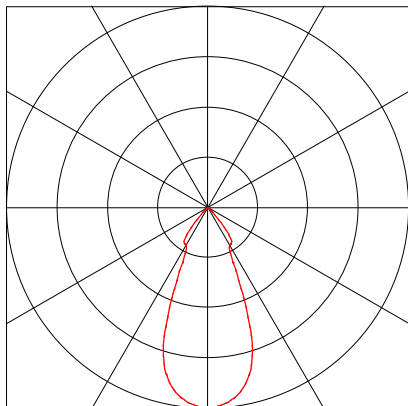
Object : Ventspils tipogrāfija  
Installation : Apgaismojums  
Project number : 1  
Date : 14.03.2017

**RELUX®**  
light simulation tools

## Luminaire data

**RZB, Alu-Star Mini (721815.0031.1)**

### Data sheet



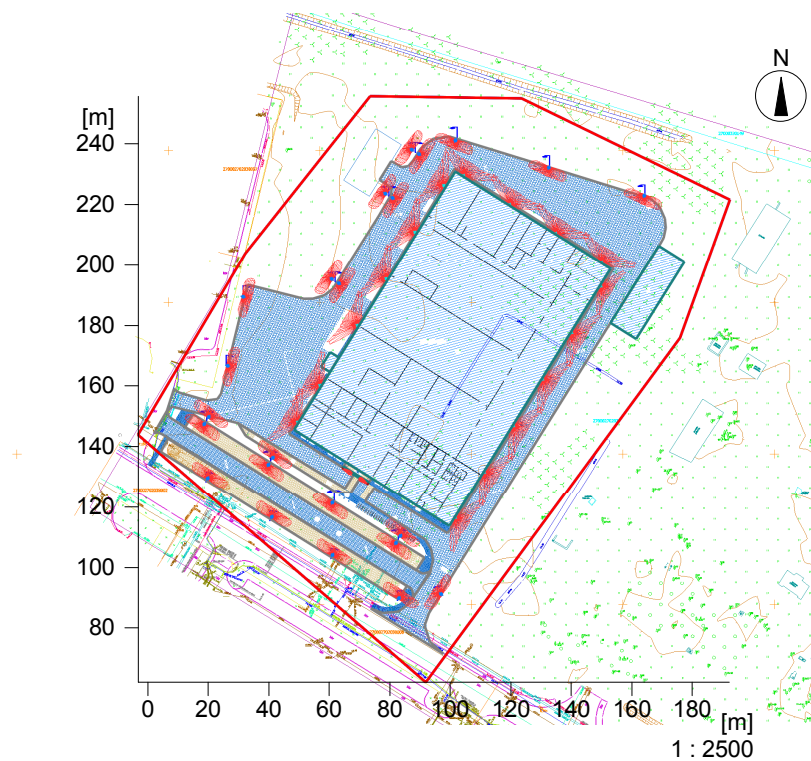
Object : Ventspils tipogrāfija  
Installation : Apgaismojums  
Project number : 1  
Date : 14.03.2017

## Exterior 1(Copy of)

### Description, Exterior 1(Copy of)

#### Floor plan

---



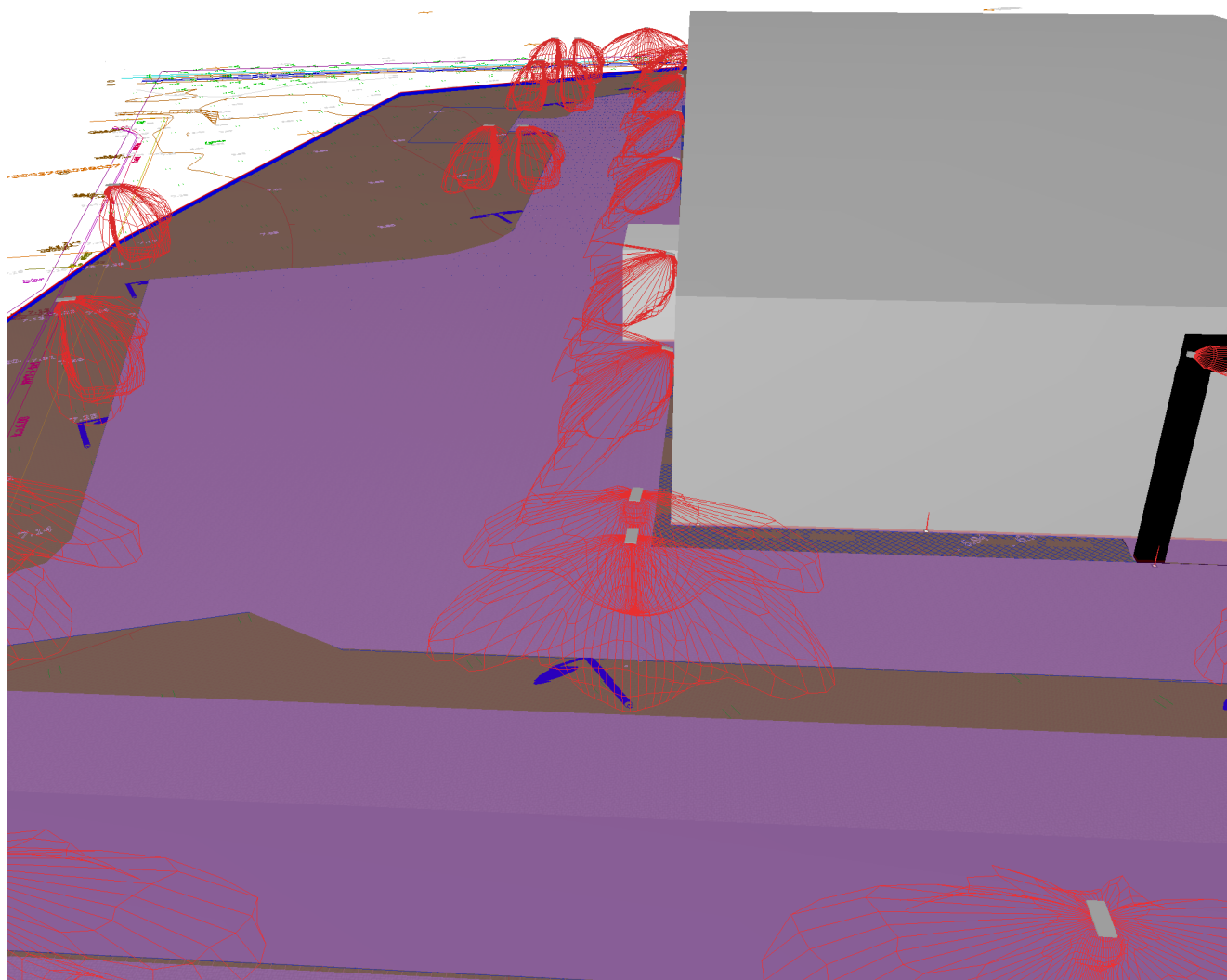
Object : Ventspils tipogrāfija  
Installation : Apgaismojums  
Project number : 1  
Date : 14.03.2017

**RELUX**<sup>®</sup>  
light simulation tools

## Description, Exterior 1(Copy of)

### 3D view, View 1

---



---

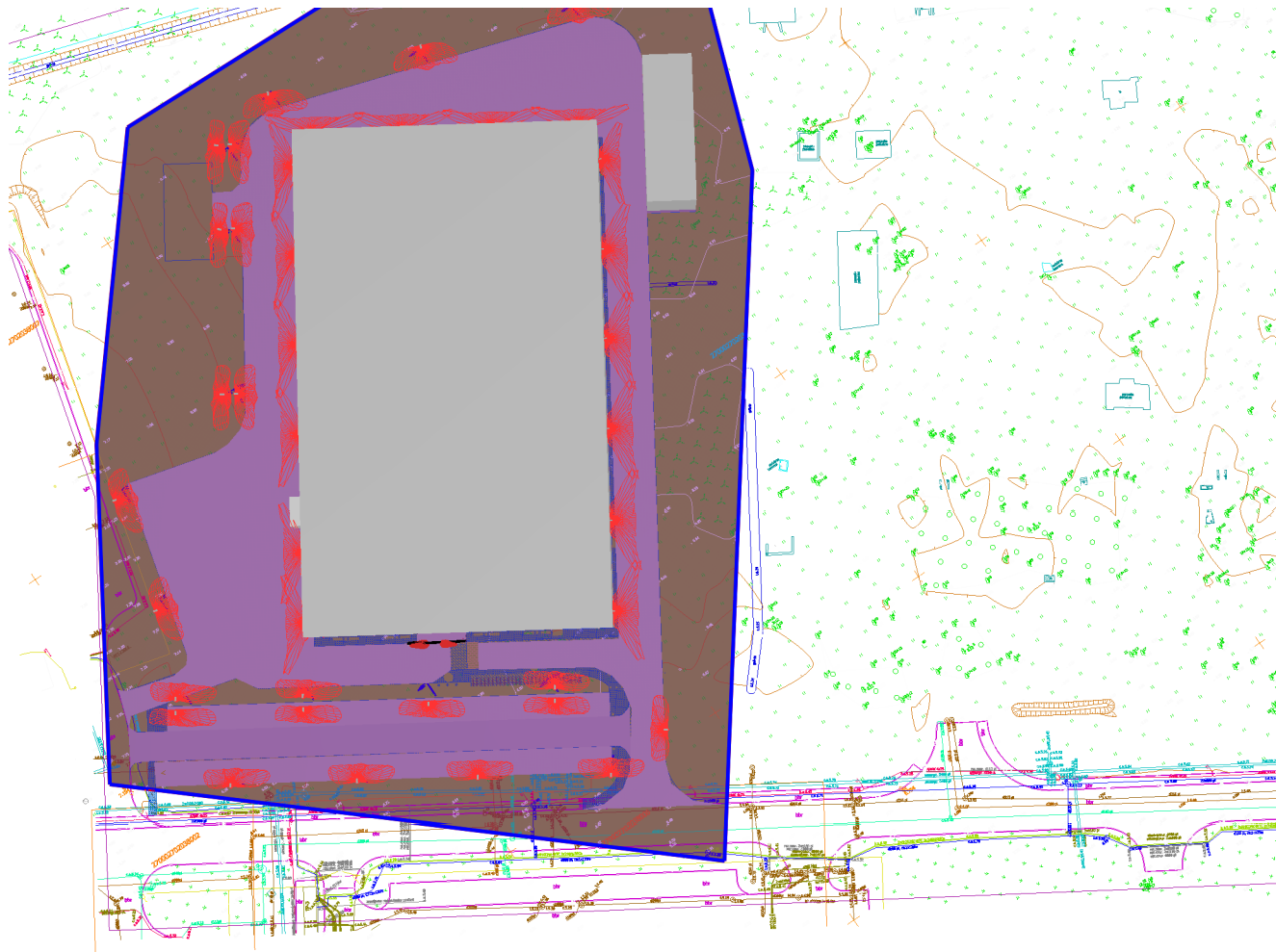
-please put your own address here-

Object : Ventspils tipogrāfija  
Installation : Apgaismojums  
Project number : 1  
Date : 14.03.2017

**RELUX**<sup>®</sup>  
light simulation tools

## Description, Exterior 1(Copy of)

### 3D view, View from above



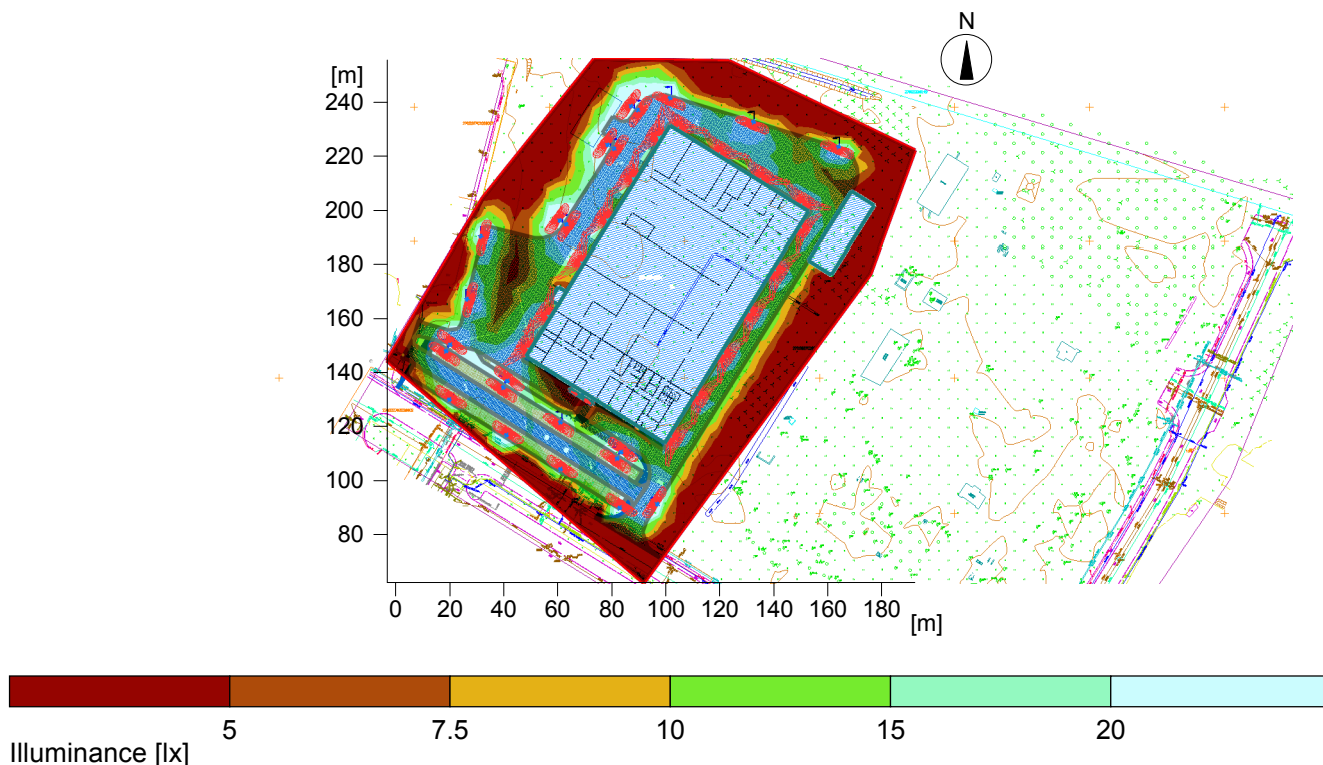
-please put your own address here-

Object : Ventspils tipogrāfija  
Installation : Apgaismojums  
Project number : 1  
Date : 14.03.2017

## Exterior 1(Copy of)

### Summary, Exterior 1(Copy of)

#### Result overview, Evaluation area 1



#### General

Calculation algorithm used  
Maintenance factor

Average indirect fraction  
0.80

Total luminous flux of all lamps  
Total power  
Total power per area (21721.05 m<sup>2</sup>)

273627 lm  
2678.0 W  
0.12 W/m<sup>2</sup> (1.02 W/m<sup>2</sup>/100lx)

#### Evaluation area 1

#### Reference plane 1.1

Horizontal  
Em 12.1 lx  
Emin 0 lx  
Emin/Eav (Uo) 0.00  
Emin/Emax (Ud) 0.00  
Position 0.10 m

#### Type No.\Make

6 16 Order No. : VIZULO MINI MARTIN 52W  
Luminaire name : MRS 052 740 L17 A024 SN NG1 O60 S-BIN  
Equipment : 1 x MRS 24 LED / 5572.47 lm

10 23 Order No. : VIZULO STORK 68W  
Luminaire name : SR 068 740 02 01 2 S N ND 03 1  
Equipment : 1 x Stork 2 modules / 6924.68 lm

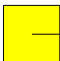

Object : Ventspils tipogrāfija  
Installation : Apgaismojums  
Project number : 1  
Date : 14.03.2017



## Exterior 1(Copy of)

### Summary, Exterior 1(Copy of)

#### Result overview, Evaluation area 1

		<b>RZB</b>	
15	9	Order No.	: 641302.000.1
		Luminaire name	: Terra Edelstahl 245
		Equipment	: 1 x LED Modul 840 / 2400 lm
16	2	Order No.	: 721815.0031.1
		Luminaire name	: Alu-Star Mini
		Equipment	: 1 x LED Modul 840 / 1800 lm

Object : Ventspils tipogrāfija  
Installation : Apgaismojums  
Project number : 1  
Date : 14.03.2017

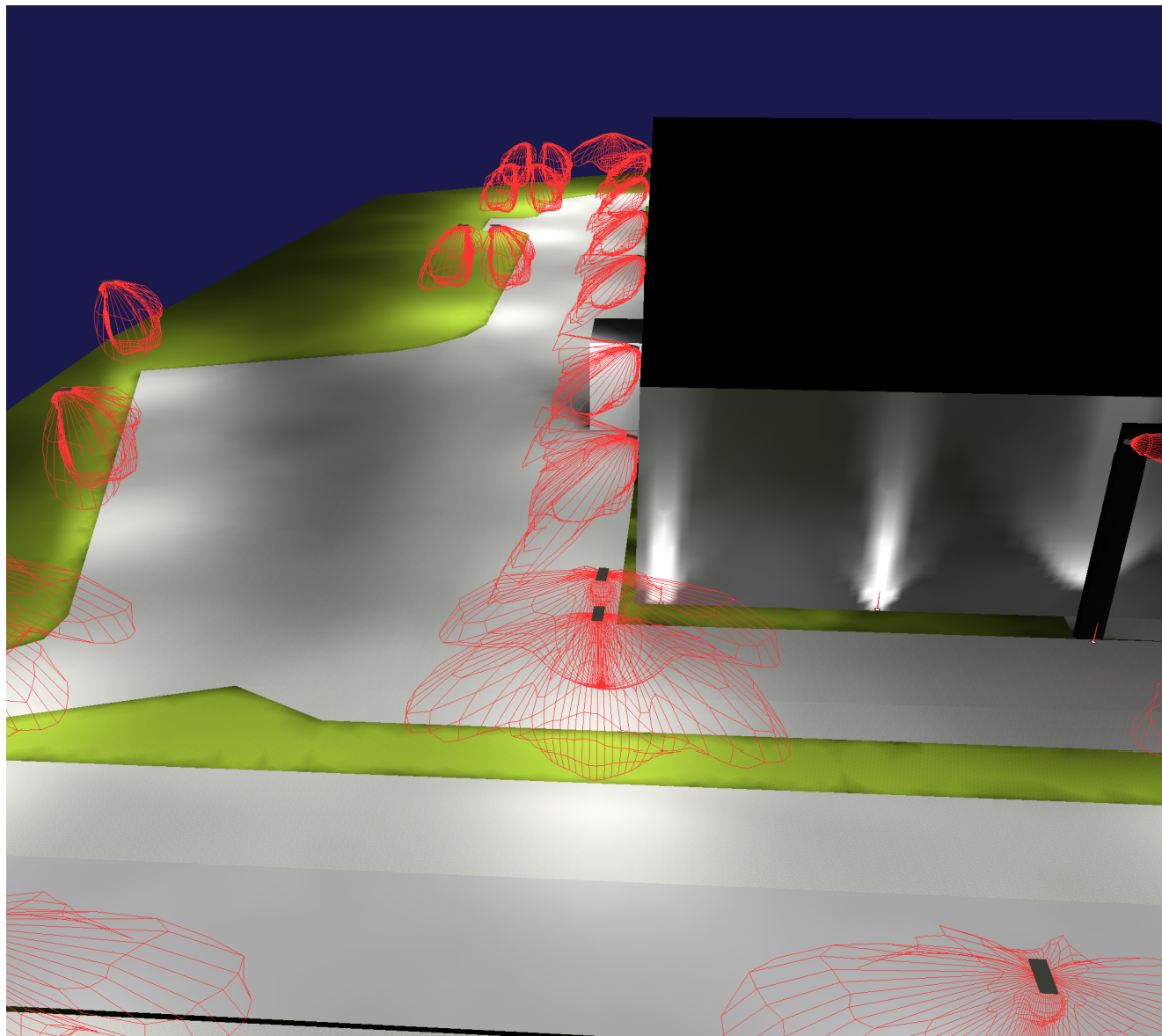
**RELUX**<sup>®</sup>  
light simulation tools

## Exterior 1(Copy of)

### Calculation results, Exterior 1(Copy of)

#### 3D luminance, View 1

---



---

#### Luminance in the scene

Minimum: : 0 cd/m<sup>2</sup>  
Maximum: : 97.9 cd/m<sup>2</sup>

---

-please put your own address here-

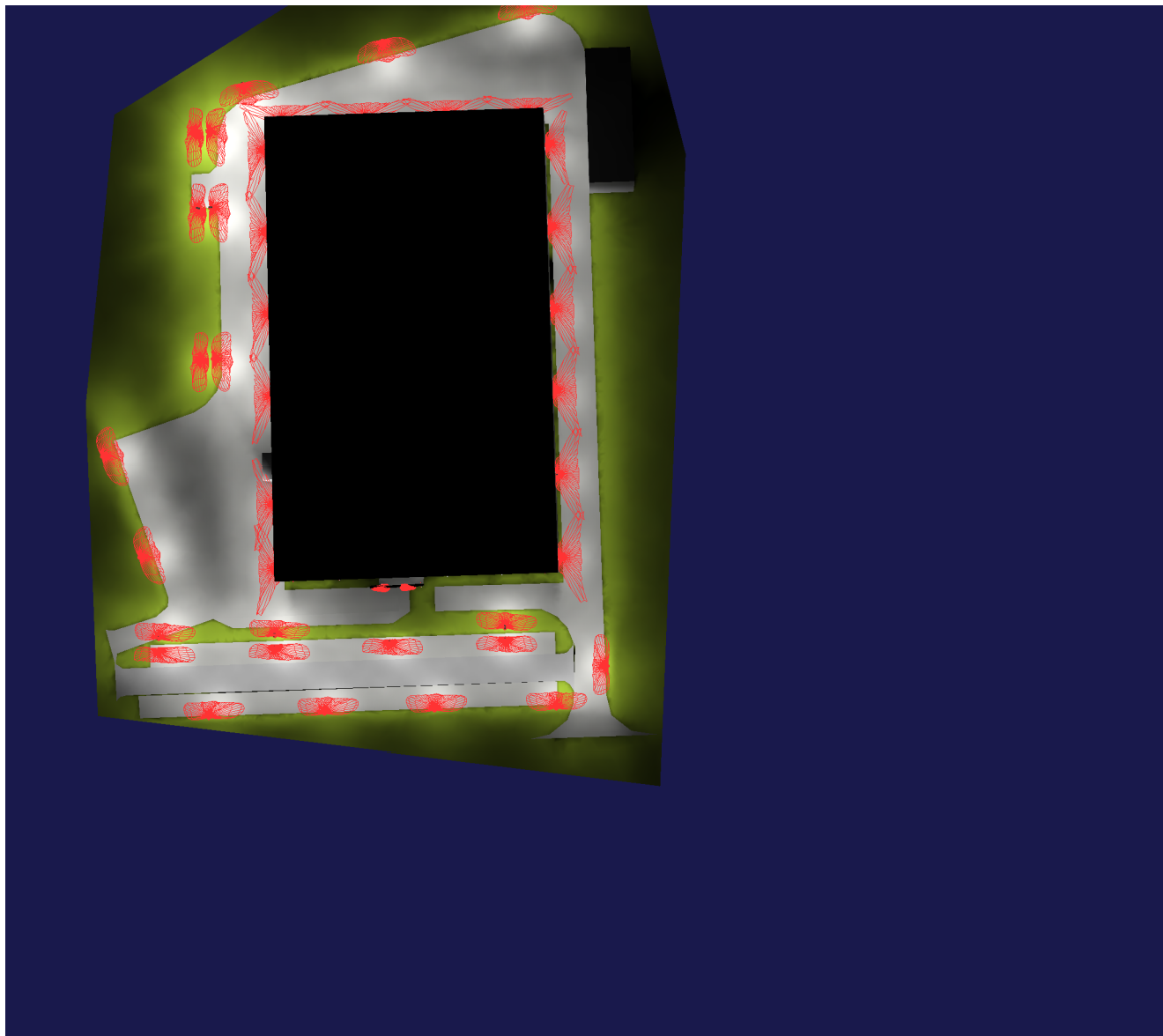
Object : Ventspils tipogrāfija  
Installation : Apgaismojums  
Project number : 1  
Date : 14.03.2017

**RELUX**<sup>®</sup>  
light simulation tools

## Calculation results, Exterior 1(Copy of)

### 3D luminance, View from above

---



---

Luminance in the scene

Minimum: : 0 cd/m<sup>2</sup>

Maximum: : 97.9 cd/m<sup>2</sup>

---

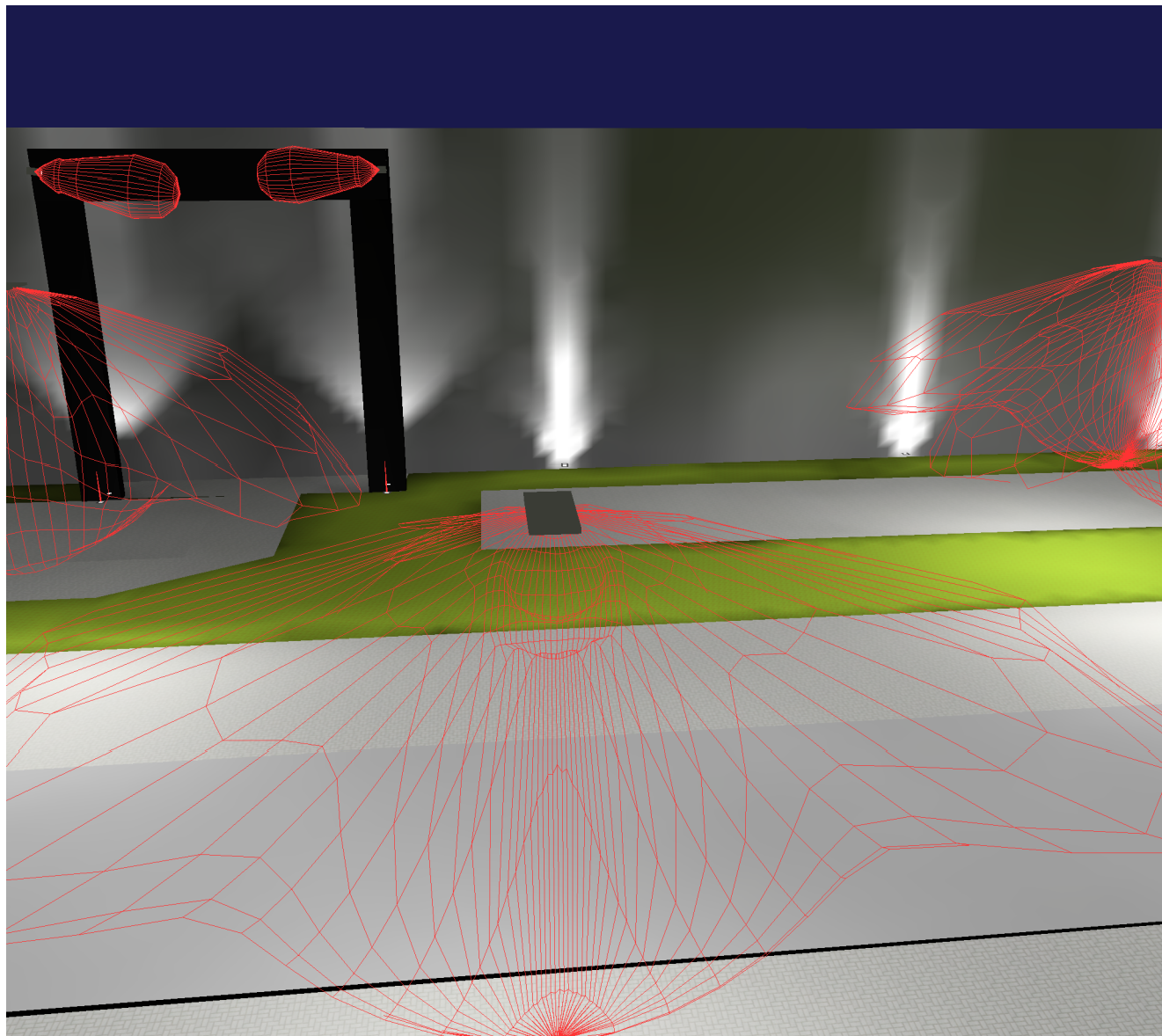
-please put your own address here-

Object : Ventspils tipogrāfija  
Installation : Apgaismojums  
Project number : 1  
Date : 14.03.2017

**RELUX**<sup>®</sup>  
light simulation tools

## Calculation results, Exterior 1(Copy of)

### 3D luminance, View 3



Luminance in the scene

Minimum: : 0 cd/m<sup>2</sup>

Maximum: : 97.9 cd/m<sup>2</sup>

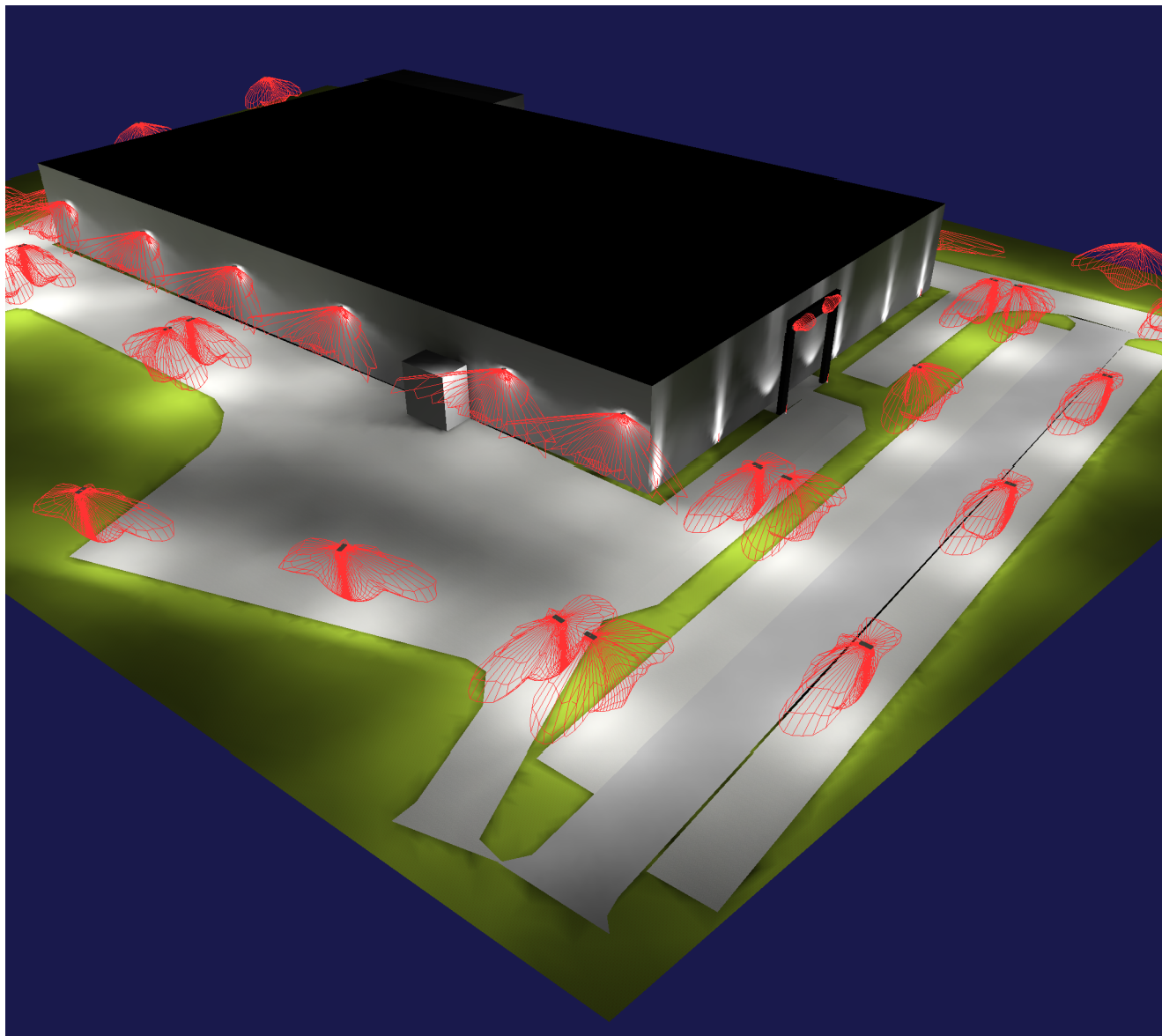
-please put your own address here-

Object : Ventspils tipogrāfija  
Installation : Apgaismojums  
Project number : 1  
Date : 14.03.2017

**RELUX**<sup>®</sup>  
light simulation tools

## Calculation results, Exterior 1(Copy of)

### 3D luminance, View 5



Luminance in the scene

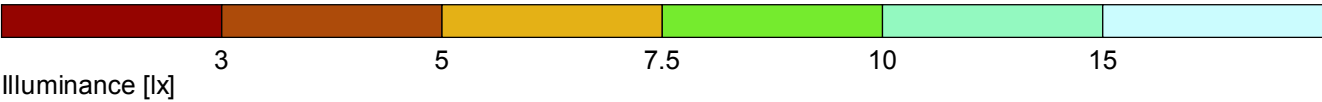
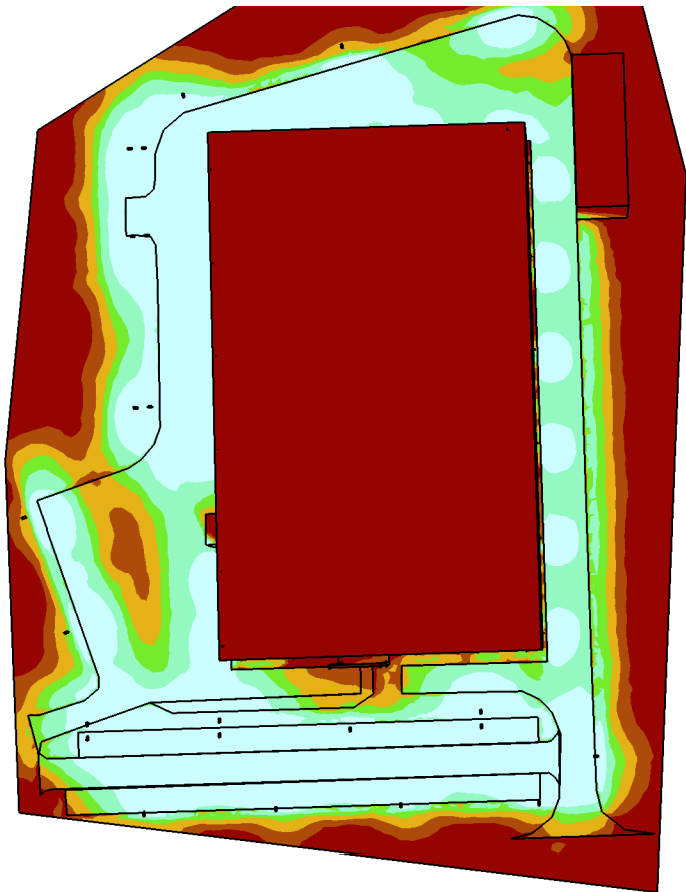
Minimum: : 0 cd/m<sup>2</sup>

Maximum: : 97.9 cd/m<sup>2</sup>

-please put your own address here-

**Calculation results, Exterior 1(Copy of)**

**3D pseudo colours, View from above (E)**

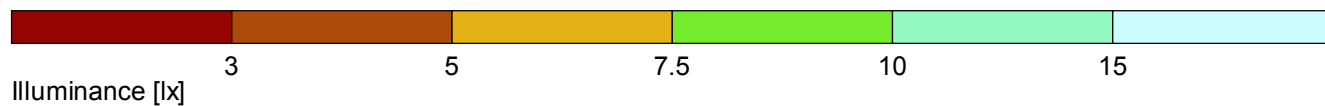
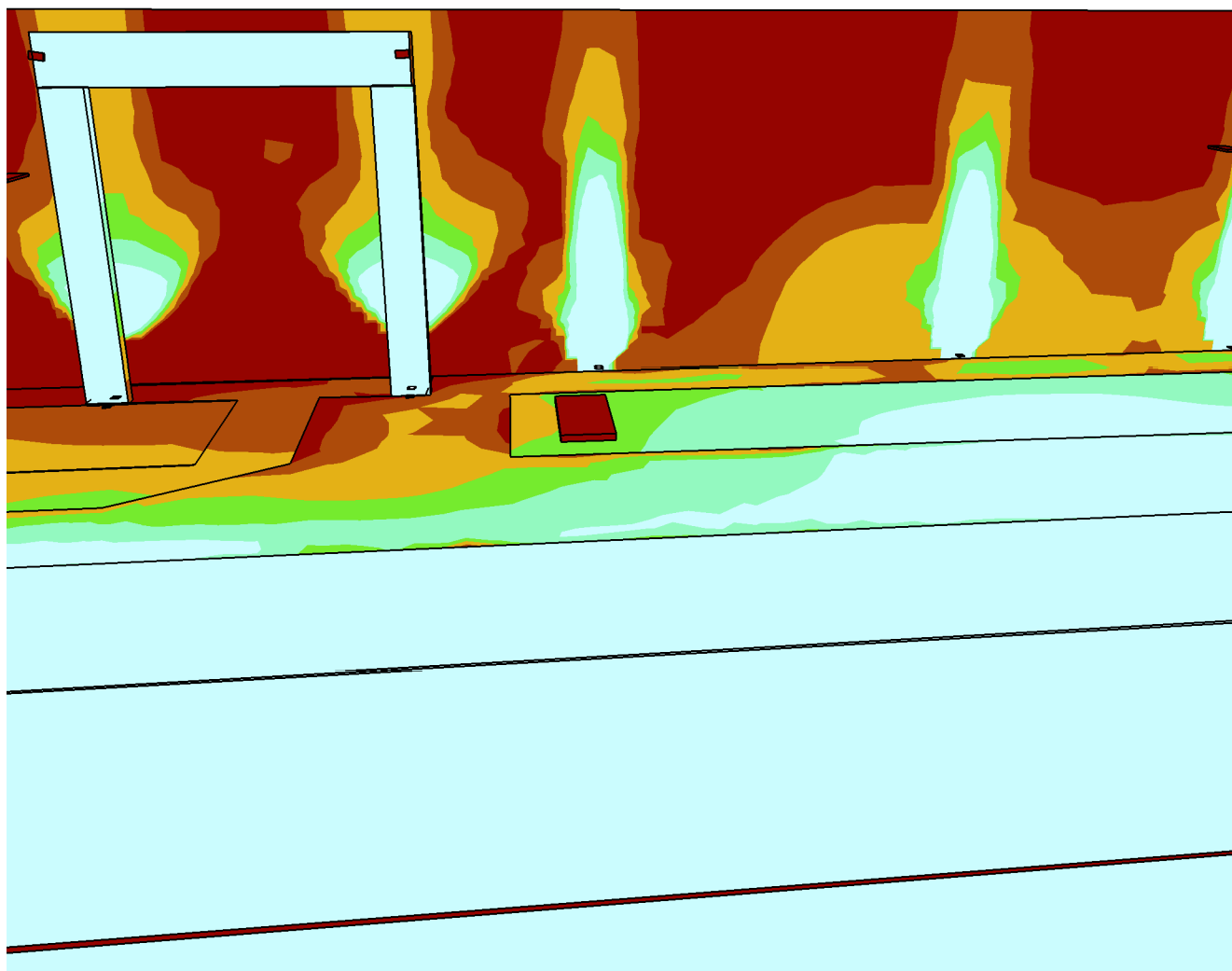


Object : Ventspils tipogrāfija  
Installation : Apgaismojums  
Project number : 1  
Date : 14.03.2017

**RELUX**<sup>®</sup>  
light simulation tools

## Calculation results, Exterior 1(Copy of)

### 3D pseudo colours, View 3 (E)



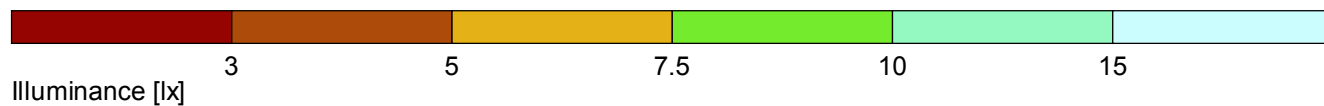
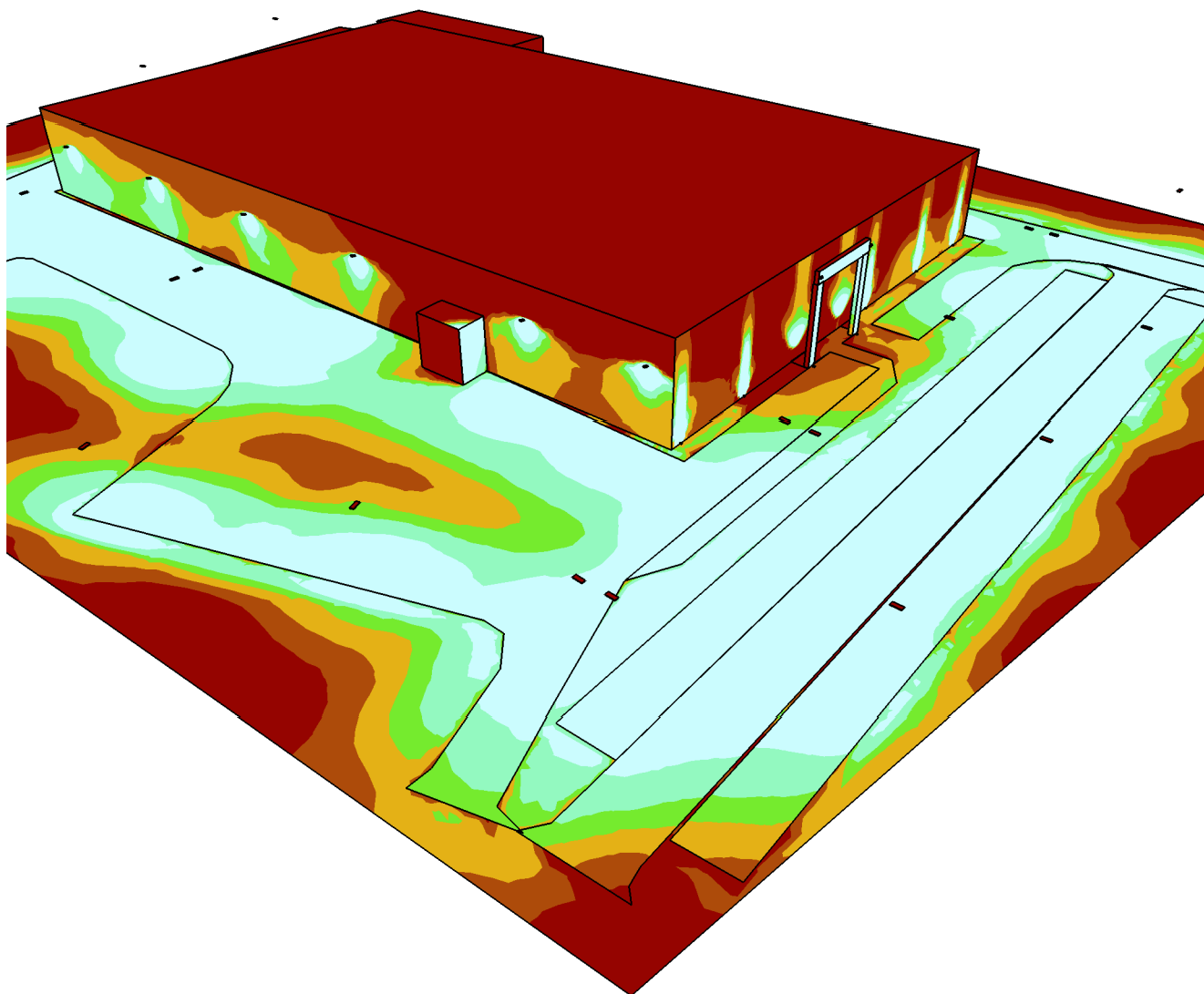
-please put your own address here-

Object : Ventspils tipogrāfija  
Installation : Apgaismojums  
Project number : 1  
Date : 14.03.2017

**RELUX**<sup>®</sup>  
light simulation tools

## Calculation results, Exterior 1(Copy of)

### 3D pseudo colours, View 5 (E)



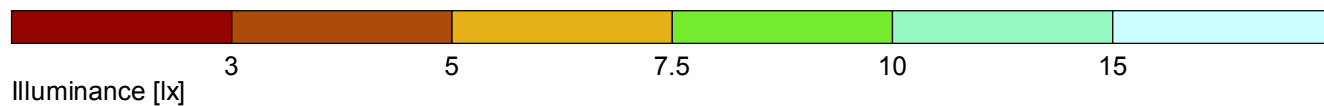
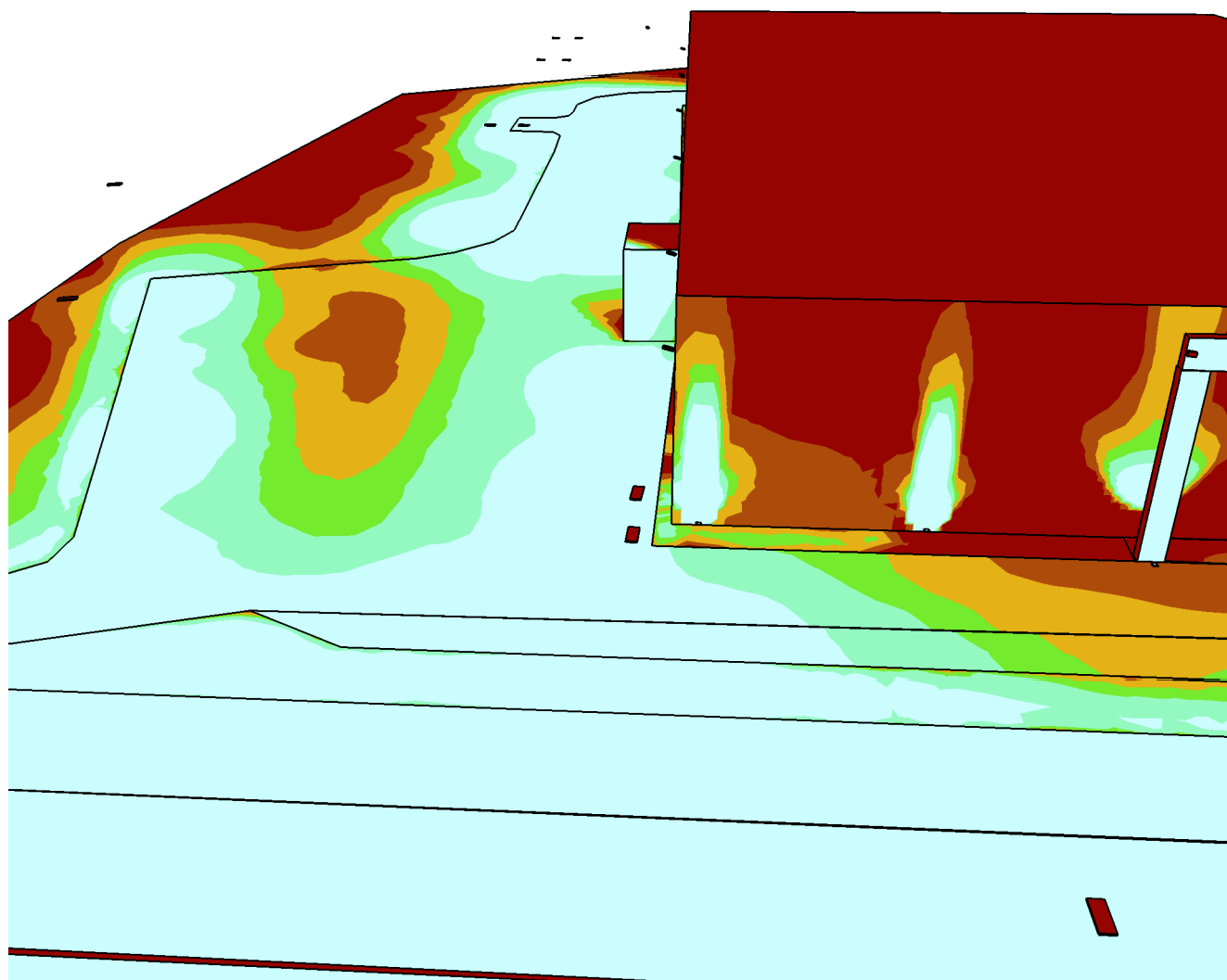
-please put your own address here-

Object : Ventspils tipogrāfija  
Installation : Apgaismojums  
Project number : 1  
Date : 14.03.2017

**RELUX**<sup>®</sup>  
light simulation tools

## Calculation results, Exterior 1(Copy of)

### 3D pseudo colours, View 1 (E)



-please put your own address here-

## Ventspils tipogrāfija

Installation : Apgaismojums

Project number : 1

Customer : VATP

Processed by :

Date : 14.03.2017

Project description:  
Apgaismojuma līmenis

The following values are based on exact calculations on calibrated lamps, luminaires and their arrangement. In practice, gradual divergences can occur.

Guarantee claims for luminaire data are excluded.

Relux and the luminaire manufacturers accept no liability for consequential damage and damage which is occasioned to the user or to third parties.

---

-please put your own address here-